

PROJECT PORTFOLIO AUTUMN 2017

LIGHTING DESIGN



COWI

“COWI LIGHTING DESIGN HAS A TRADITION FOR UNCONVENTIONAL AND INNOVATIVE LIGHTING DESIGN. OUR EXPERIENCE AND KNOWLEDGE, FROM THE SINGLE LIGHT SOURCE TO COMPLEX PERMANENT INSTALLATIONS, ENSURES A SPECTACULAR AND UNIQUE LIGHTING DESIGN THAT PROVIDES AN EXPERIENCE BEYOND THE ORDINARY”

Jørgen Kjer, IALD

PROJECT PORTFOLIO

Cover, Ofelia Square by Jens Lindhe
Content and graphic by COWI lighting design
Printed by COWI Print

CONTENT

6	DESIGN MUSEUM DENMARK
10	OFELIA SQUARE
12	MOESGÅRD MUSEUM MOMU
16	SILKEBORG HIGHWAY
20	COWI HQ
24	COPENHAGEN METRO
26	LUX CAMPUS LUND
28	KILDEN
32	ROYAL DANISH ARSENAL MUSEUM
36	THE PRISON MUSEUM
40	THE NATIONAL LIBRARY OF GREENLAND
42	VEJBRO VB232
44	PROJECT GALLERY
46	CLIENT CONSULTANCY
47	SERVICES



Design Museum Denmark

Design Museum Denmark

The Danish Chair - an international affair.

The new permanent exhibition at Design Museum Denmark tell the storey of how danish design became an international brand. 110 chairs, all design classics, are exhibited and lit as singel gems in a box.

The lighting design includes visitor triggered sensors and costumized back lighting for the display.

LOCATION
Copenhagen, Denmark

COLLABORATION
Boris Berlin Design
Design museum Denmark

AREA
1.500 m²

YEAR
2016



Ofelia Square

COWI lighting designed the lighting of an iconic new place, Ofelia Square at the heart of Copenhagen, overlooking architectural icons, Nyhavn, the Royal Theater and the Opera House. Ofelia Square was a former dock, which is now converted to the most visited urban space as well as facilitating 500 underground parking spaces on the three floors.

COWI lighting developed several special luminaires and illumination effects for the project.

The project has received several awards and this year the project was nominated to Mies van der Rohe Award.

LOCATION
Copenhagen, Denmark

COLLABORATION
Lundgaard & Tranberg

AREA
12.500 m²

YEAR
2012-2015



Photo by Jens Lindhe



Moesgård Museum MOMU

Moesgård Museum MOMU

The new Moesgård Museum is a rare architectural gem: an enormous gallery housing some of Denmark's most important prehistoric treasures. In several parts of the museum created the illusion of sunlight using modern LED technology and classic theatric effects. For the guest, COWI's lighting design adds to the experience and accentuates the architecture. For the museum, it means lower power consumption, making Moesgaard one of the most energy efficient museums in the world.

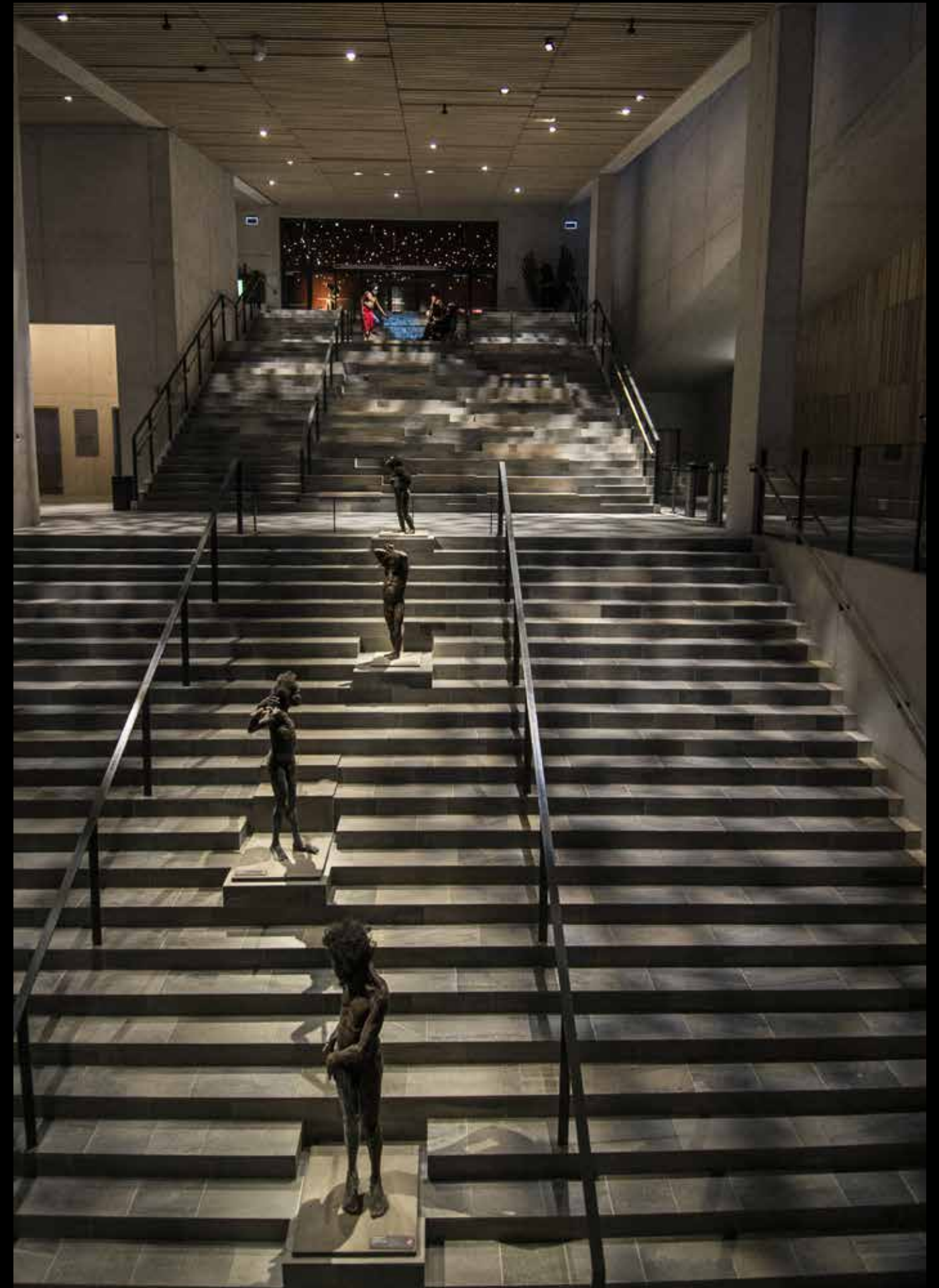
COWI's services: Lighting design, natural light and artificial light level simulations, 3D lighting renderings and consulting concerning conference and stage technology

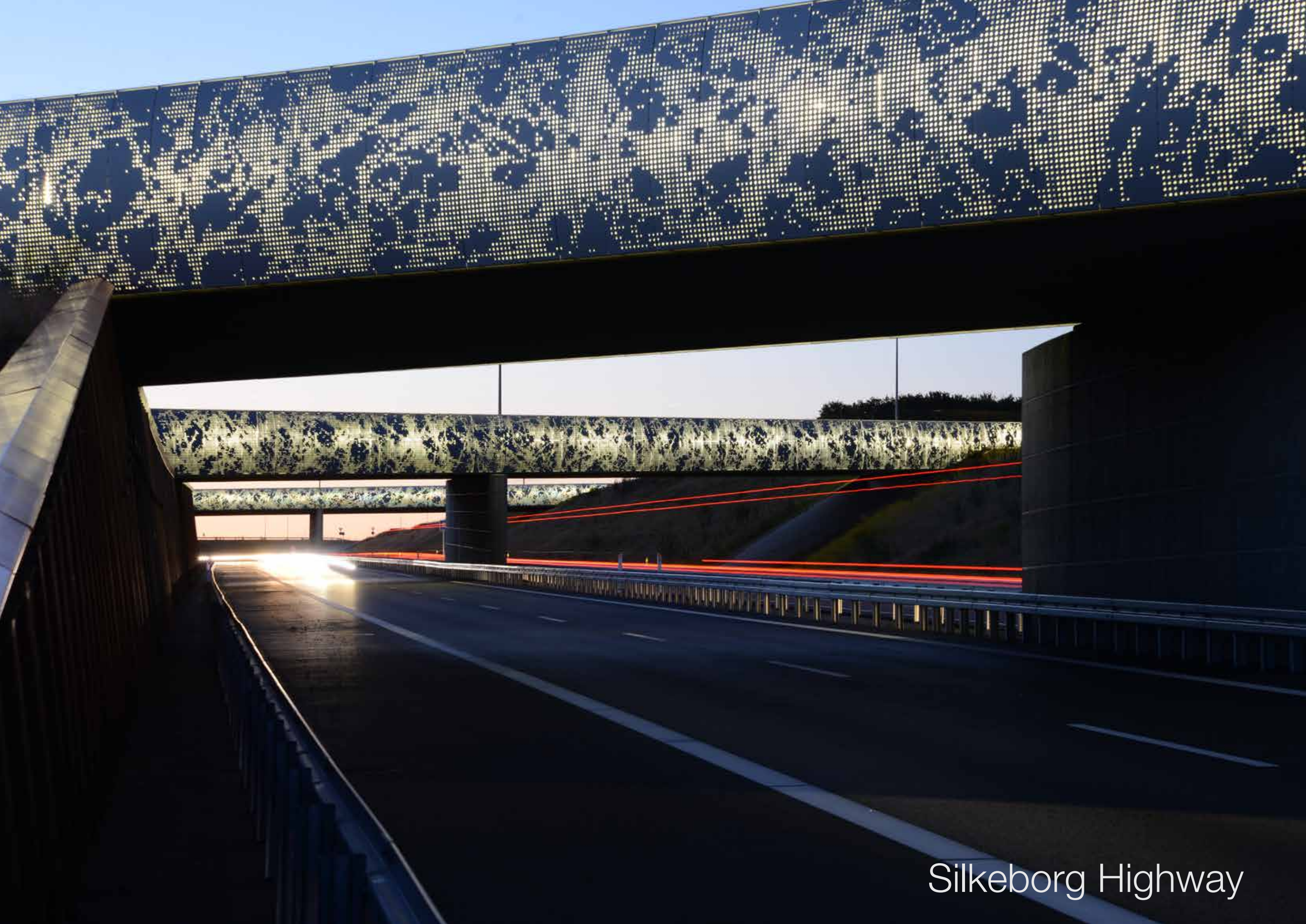
LOCATION
Aarhus, Denmark

COLLABORATION
Henning Larsen Architects

AREA
3,200 m²

YEAR
2009-14





Silkeborg Highway

Silkeborg Highway

Lighting design, solution development and execution of lighting for five bridges over Silkeborg Highway. At dusk, the perforated aluminium sheets on the bridges are illuminated with the special light patterns.

The lighting design includes the entire resting facility for the highway. The entire lighting design engages visual experiences for users, while functional requirements ensure the safety for the highway.

COWI's services: Lighting design, artificial light level simulations, 3D lighting renderings and execution.

LOCATION
Silkeborg, Denmark

COLLABORATION
Vejdirektoratet

AREA
50.000 m²

YEAR
2016





COWI HQ

COWI has set a new standard for office lighting by introducing dynamic lighting in COWI's newly renovated headquarters in Lyngby, Denmark.

The project includes 16,000 m² office space with large areas of meeting facilities.

A new iconic bridge combines the existing buildings. The new bridge found way into the project, together with a large staircase and new staff canteen, all designed by Dissing & Weitling.

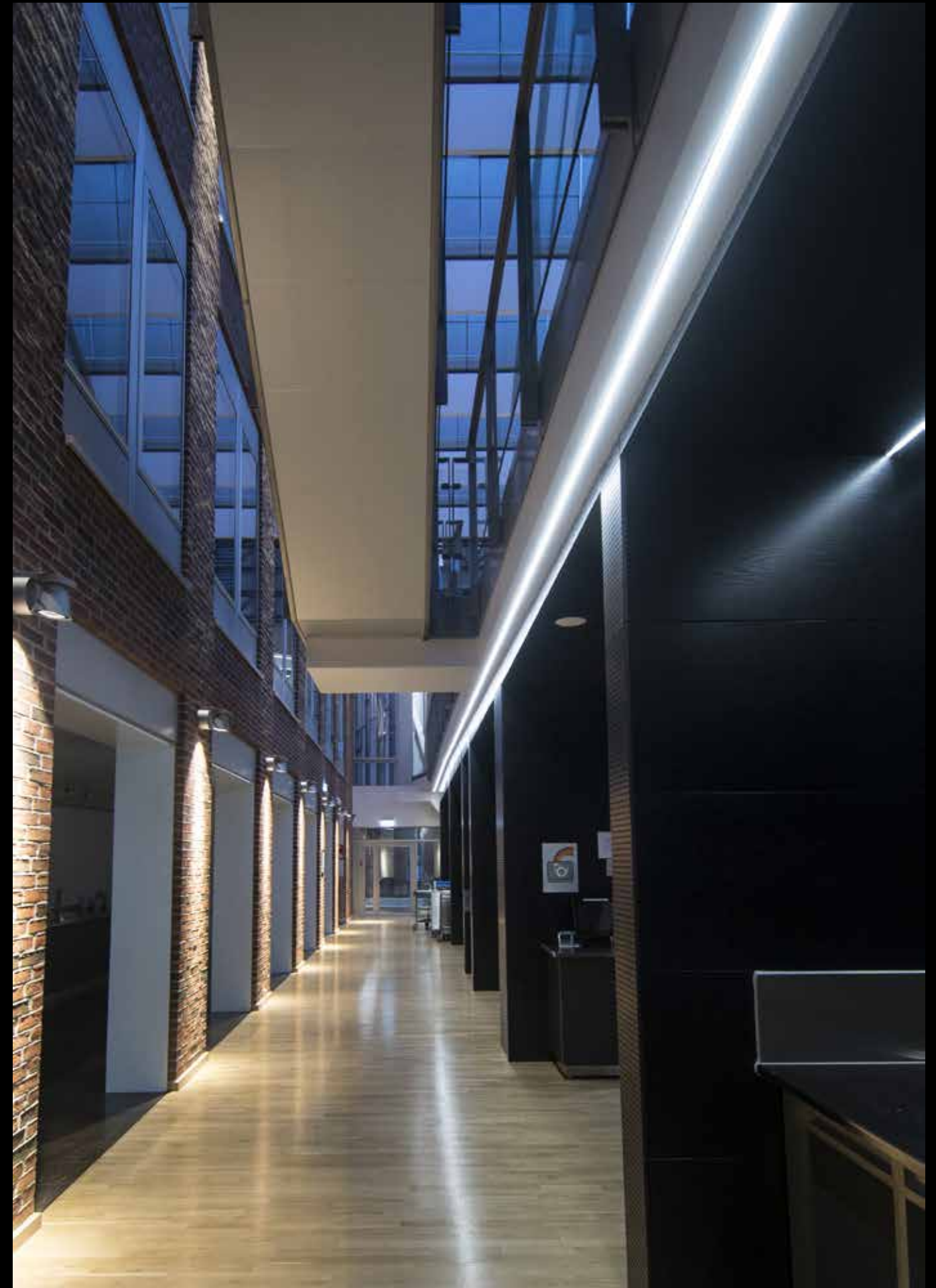
LED lighting fixtures were developed for this project, for both indoor and outdoor use.

LOCATION
Lyngby, Denmark

COLLABORATION
Nordea ejendomme
Dissing & Weitling

AREA
16,000 m²

YEAR
2013-2015



Copenhagen Metro

Public space interior and exterior lighting design for the Copenhagen Metro.

The project involves designing the lighting concept for metro stations, including specially developed solutions for general lighting. One of the key concepts was to use reflected lighting. Lighting technology was developed for several signature stations over ground with associated outdoor public areas. The project also includes dynamic artificial daylight in all the underground stations.

LOCATION
Copenhagen, Denmark

COLLABORATION
Arkitema

AREA
30,000 m²

YEAR
2015-



LUX Campus Lund

LUX is composed of separate buildings from different time periods that have been joined in a modern unity that houses the Faculties of Humanities and Theology at Lund University. The property includes a large library, modern lecture halls and classrooms, several conference rooms, offices, a café, foyers and a spectacular atrium.

The interior lighting includes artificial daylight that creates a sense of space and increased comfort. The exterior lighting creates a safe and welcoming environment.

LOCATION
Lund, Sweden

COLLABORATION
Jais Architects

AREA
17,000 m²

YEAR
2015



Winner of:
THE SWEDISH LIGHTING AWARD 2015





Kilden

Interior and exterior architectural lighting design of a large cultural building including a spectacular facade and foyer area, a concert hall, and a theatre. No-glare inground light fixtures were developed specifically for this project.



Nomination:

THE NORWEGIAN LIGHTING AWARD 2013

Jury's comment:

The lighting design manages to unite the interior and exterior, creating a transparent landmark that invites people to enter. Clear and distinct choices of good design have been made. Every single reflector is adapted for accurate position in relation to the inclined wall. The task is difficult and the client should be praised for the detailed design executed so seriously and accurately. The level of precision of this solution sets an example for other projects.

LOCATION

Kristjansand, Norway

COLLABORATION

ALA Architects, Kristiansand Municipality

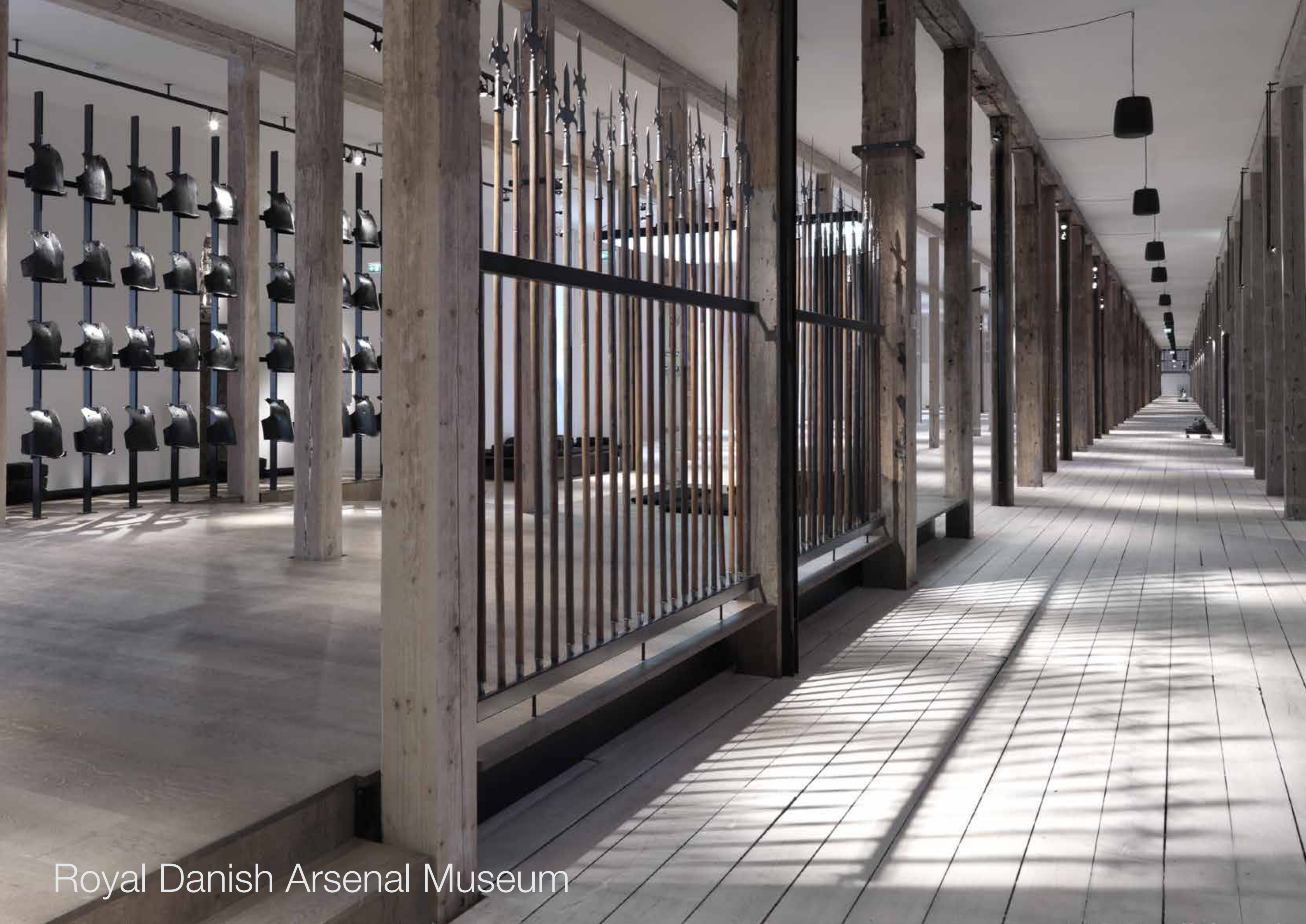
AREA

16,500 m²

YEAR

2008-2012





Royal Danish Arsenal Museum

Royal Danish Arsenal Museum

Lighting design and technical consultancy for a permanent 8,000 m² exhibition in a classified building. The project included the overall lighting design and the development of several lighting fixtures with magnetic attachments.

LOCATION
Copenhagen, Denmark

COLLABORATION
JAC Studio

AREA
8,000 m²

YEAR
2011-13

“Standing in Tøjhusmuseet’s newly renovated room on 1st floor, one cannot help being impressed. This is a spectacular collection of war gear, exhibited with an artistic expression.”

- Berlingske newspaper





The Prison Museum

The Prison Museum

Grey, grim and gloomy. Without attempting to embellish the bleak reality, the exhibition at Horsens Prison Museum offers a view into the daily life of inmates and prison staff during the 153 years the prison was in use.

The lighting design enhances the story of the miserable lives and cruel fortunes behind the closed gates and is deliberately understated and bleak and does not leave the visitor in any doubt that they are in a building that was designed to confine some of Denmark's most hard-boiled criminals of all time.

LOCATION
Horsens, Denmark

COLLABORATION
Kvorning design & kommunikation

AREA
5,000 m²

YEAR
2015-2017



Winner of:

inAVation Award 2016

English Heritage Award for Best Visitor Attraction Of The Year 2016



The National Library of Greenland

The library functions as a public and national library, and the building is often used for other purposes, for instance drum dance, theatre performances and exhibitions. This demands a high flexible lighting solution.

The Nuuk National Library (Nunatta Atuagaate-garfia) has recently completed a thorough renovation, which included a new ventilation system and a fully controllable daylight simulating lighting system with small tiltable downlights. Each floor is divided into approx 17 zones which ensures flexibility in the lighting design.

LOCATION
Nuuk, Greenland

COLLABORATION
TNT architects and Vanpeé & Westerberg

AREA
900 m²

YEAR
2016



Vejbro VB 232

Lighting design and technical consultancy for a new bridge in Hellerup. The project included general streetlighting and lighting design for an architectural wall artpiece. The asymmetric lighting on the artpiece also provides comfortable lighting for pedestrians and bicycles.

COLLABORATION
Dissing & Weitzling

LOCATION
Hellerup, Denmark

AREA
1,000 m²

YEAR
2015



GL. HOLTE KIRKE

Location: Lyngby, Denmark
Area: 2.000 m²
Year: 2011-2012



PAKHUSET

Location: Copenhagen, Denmark
Collaboration: Lundgaard & Tranberg
Area: 16.500 m²
Year: 2009- 2014



THE DANISH RAILWAY MUSEUM

Location: Odense, Denmark
Area: 1.500 m²
Year: 2017



STOREBRAND HQ

Location: Oslo, Norway
Collaboration: Link Signatur
Area: 1.200 m²
Year: 2010



DTU LIFE SCIENCE & BIOENGINEERING CAMPUS

Collaboration: Rørbæk & Møller
Location: Lyngby, Denmark
Area: 40.000 m²
Year: 2014-2016



COPENHAGEN AIRPORT FINGER E

Location: Copenhagen Denmark
Collaboration: ZESO and Wilhelm Lauritzen Arc.
Area: 22.000 m²
Year: 2016-



TEGLHOLMEN, SIKKER SKOLEVEJ

Location: Copenhagen, Denmark
Collaboration: Via Trafik, Gottlieb Paludan
Year: 2012-2015



GRUNDFOS VISITOR CENTER

Collaboration: Kvorning design & kommunikation
Location: Bjerringbro, Denmark
Area: 850 m²
Year: 2012



CLIENT CONSULTANCY

THOMAS B THRIGES GADE, DK
Client consultancy regarding lighting design for several new urban spaces in Odense towncenter Area 10,000 m² . 2015

FIELDS SHOPPING CENTER, DK
Client consultancy regarding overall lighting design for Food Court and cinemabridge. Daylight and dynamic artificial lighting. 2015

NEW HOSPITAL NORTH SEALAND, DK
Client consultancy regarding overall lighting design, both architectural and dynamic artificial lighting. Area 124,000 m². 2014 -2018

TUV RAILWAY, SWEDEN
Lux measurement and documentation for various train stations. 2014 .

COPENHAGEN METRO, DK
Lux measurement and documentation for various train stations. 2014.

HVIDOVRE COMMUNITY CENTER, HVIDOVRE DK
Specification for houselighting and controlsystem in 600 seat multihall. Project includes RGB profile fixtures. 2013- 2014.

BLOX
Client consultancy regarding advanced lighting controlsystem both for public, exhibition and office areas. Consultancy on conference technology as well. 2013-2014.

THE BLUE PLANET, KASTRUP DK
Client consultancy regarding lighting and exhibition technology in the audience areas of the aquarium. Consultancy on conference and stage technology as well. 2007-2013.

KING ABDULLAH II HOUSE OF CULTURE & ART, JORDAN
Client consultancy on architectural lighting design for the construction of major cultural centre featuring concert hall and a theatre hall designed by Zaha Hadid Architects, 2010-2013.

GUIDING LIGHT, MUSCAT OMAN
Lighting design concept development for a large lighthouse monument at Muscat Harbour. The lighting design concept involves many spectacular ways to use light - both day and night. One of the lighting designs uses the monthly full moon, small flames and torches. In collaboration with Lundgaard & Tranberg Architects. 2011-12.

NORDEA NORDIC BANKING, SCANDINAVIA
Technical consultancy on complete renovation and replacement of light sources in various facade signs in the Nordic countries. 2008-2010

NETDESIGN, FARUM DK
Development and optimization of video conference lighting. The lighting concept was planned for interior and exterior use. 2010.

TRYG VESTA HQ, CPH DENMARK AND BERGEN NORWAY
Lighting design and technical consultancy for the client regarding a larger indoor and outdoor renovation of the TrygVesta headquarters in Copenhagen and Bergen. In collaboration with Fridbjørk Architects. 2009-2010.

WAVES SHOPPING CENTER, HUNDIGE DK
Daylight calculations and consultancy on daylight. In collaboration with PLH Arkitekter. 2009.

LOUISIANA PAVILION, HUMLEBÆK DK
Design and planning of light and solar cell system for sculpture in connection with the exhibition “Fremtidens arkitektur er grøn” (Future architecture is green) at Louisiana. In collaboration with 3XN A/S. 2009.

CONCERT HALL, RIGA, LATVIA
Development of the stage technical part in the program of requirement for a large and advanced concert hall. Collaboration partner: Latvia Council. 2008 - 09

TIETGENS HUS, CPH DK
Preparation of lighting concept for exterior and interior lighting of completely renovated bank rooms. Several customised daylight solutions. 2008.

THE NATIONAL BOARD OF INDUSTRIAL INJURIES
Copenhagen. Consultancy in connection with solving lighting problems in offices. In collaboration with the Agency for Culture and Palaces. 2008.

DR BYEN
News and sports, Ørestaden. Lighting design and test of solutions for TV studio and surrounding editorial secretariat. In collaboration with DR design. 2006-2007.

SERVICES

COMPETITION PROPOSALS

ATMOSPHERIC IMPACT

SKETCHING

CLIENT CONSULTANCY

3D-MODELLING

VISUALISATIONS

LIGHT CALCULATIONS

ENERGY OPTIMATIONS

LIGHTING TEST

MOCK-UPS

FIXTURE DEVELOPMENT

LIGHTING CONTROLS

BIM

ELECTRICAL ENGINEERING

SUPERVISION

LIGHT MEASUREMENTS

FOCUSSING

COMISSIONING

LIGHTING DESIGN

LIGHT PLANS

ADDRESS COWI A/S
Parallelvej 2
DK-2800
Kongens Lyngby
Denmark

PHONE +45 5640 0000

EMAIL cowi@cowi.com

WWW cowi.com

WWW cowi.dk/lysdesign

CONTACT Jorgen Kjer
Lighting Designer
+45 4061 1440
kjer@cowi.com

Lisa Dam Trapp
Lighting Designer
+45 4176 0677
litp@cowi.com

Stefan Pavic
Lighting Designer
+45 2225 7330
stpa@cowi.com

COWI