

District heating and cooling

If you want more information about these projects – or if you want to know about other projects, which COWI has carried out in Ukraine – you may simply use this QRcode:



Selected references



Denmark Transmission pipeline

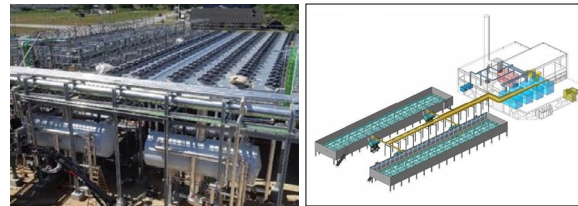
Client
Aarhus Affald Varme

Period
2019-2021

COWI's services

- Detailed design and pipe routing
- Termis hydraulic simulations
- Pressure shock and thermal expansion simulations, PED approval
- EU-Tendering
- Coordination with relevant authorities
- Supervision and commissioning

The project
New 1,4 km DN400 transmission pipeline in the city center of Aarhus, Denmark's second largest city.



Denmark 15 MW Heat Pump

Client
Frederikshavn Fjernvarme – a consumer owned DH company

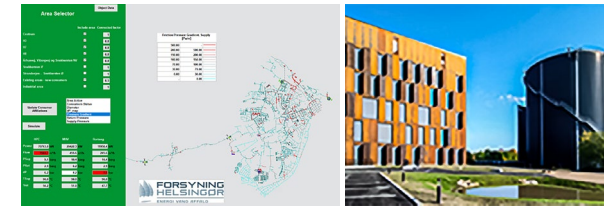
Period
2019-2021

COWI's services

- Owner`s Engineer
- Design
- Project management
- Contracting
- Supervision

The project

- 15 MW district heating output
- Air to water heat pump



Denmark Helsingør Master planning

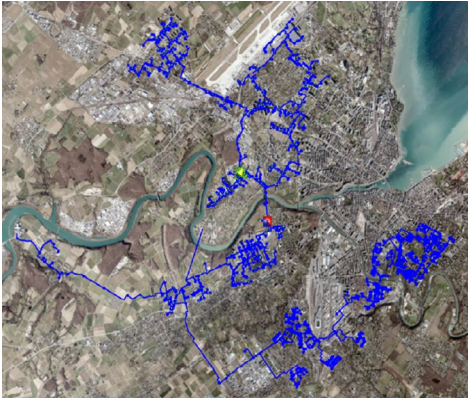
Client
Forsyning Helsingør

Period
2019-2021

COWI's services

- District Heating Expansion Planning
- Termis Hydraulic Simulations
- Pipeline routing and dimmensiong

The project
Expansion plan for district heating supply
Priorities towards 2030



Switzerland

Geneva Master planning

Client

SIG – Services industries de Genève

Period

2019-2021

COWI's services

- District Heating planning and Design
- Termis Hydraulic Simulations
- Real-time Modelling & Optimizations
- Pipe Network Design
- District (from Lake Geneva)
- Energy Production
- Maximizing renewable energy production

The project

Connecting networks and preparing for the future:
Move towards a sustainable and connected society.

Mongolia

Redesign and optimization

End Client

Ulaanbaatar District heating

Period

1995 – today

The Role

Advisor for major construction
and development projects.

COWI's services

- District Heating Specialist
- Development plants
- Detailed design
- Tendering

The project

Ulaanbaatar District Heating
Renewable Heating Integration Study